



**India Meteorological Department
(Ministry of Earth Sciences)**

SPECIAL MESSAGE

TIME OF ISSUE: 1200 HOURS IST

DATED: 09.11.2021

FROM: INDIA METEOROLOGICAL DEPARTMENT (FAX NO. 24643965/24699216/24623220)

**TO: CONTROL ROOM, NDM, MINISTRY OF HOME AFFAIRS (FAX.NO. 23093750)
CONTROL ROOM NDMA (FAX.NO. 26701729)
CABINET SECRETARIAT (FAX.NO.23012284, 23018638)
PS TO HON'BLE MINISTER FOR S & T AND EARTH SCIENCES (FAX NO.23316745)
SECRETARY, MOES, (FAX NO. 24629777)
H.Q. (INTEGRATED DEFENCE STAFF AND CDS) (FAX NO. 23005137/23005147)
DIRECTOR GENERAL, DOORDARSHAN (23385843)
DIRECTOR GENERAL, AIR (23421105, 23421219)
PIB MOES (FAX NO. 23389042)
UNI (FAX NO. 23355841)
D.G. NATIONAL DISASTER RESPONSE FORCE (NDRF) (FAX NO. 26105912, 2436 3260)
DIRECTOR, PUNCTUALITY, INDIAN RAILWAYS (FAX NO. 23388503)
CHIEF SECRETARY, MAHARASHTRA (FAX NO 022-22028594)
CHIEF SECRETARY, GUJARAT (FAX NO 079-23250305)
ADMINISTRATOR, DAMAN, DIU, DADRA & NAGAR HAVELI (FAX NO 0260-2230775)
CHIEF SECRETARY, GOA (FAX NO 0832-2415201)
CHIEF SECRETARY, KARNATAKA (FAX NO 080-22258913)
CHIEF SECRETARY, KERALA (FAX NO 0471-2327176)
ADMINISTRATOR, LAKSHADWEEP (FAX NO 04896-26284)
CHIEF SECRETARY, ANDAMAN & NICOBAR ISLANDS (FAX NO. 03192- 232656)
CHIEF SECRETARY, ANDHRA PRADESH (FAX NO. 0863-2441029, 08645-246600)
CHIEF SECRETARY, TAMIL NADU (FAX NO 044-25672304)
CHIEF SECRETARY, PUDUCHERRY (FAX NO 0413-2334145)**

Sub: (a) Low Pressure Area formed over southeast Bay of Bengal.

(b) Well Marked Low Pressure Area (remnant of the Depression) over central parts of Arabian Sea

(a) Low Pressure area over southeast Bay of Bengal

Under the influence of the cyclonic circulation over southeast Bay of Bengal & neighbourhood, a low pressure has formed over the same region at 0830 hrs IST of today, the 9th November 2021. It is likely to concentrate into a Depression over southwest & adjoining southeast Bay of Bengal during next 36 hours. It is likely to move west – northwestwards and reach near north Tamilnadu coast by the early morning of 11th November, 2021.

In association with this formation, there would be a continuation of the ongoing active rain spell over Tamil Nadu till 11th November.

Warnings:

(i) Rainfall (warning graphics enclosed)

9th Nov.: Light to moderate rainfall at most places with **heavy to very heavy rainfall falls** & extremely heavy falls at isolated places very likely over south coastal Tamil Nadu.

10th Nov.: Light to moderate rainfall at most places with **heavy to very heavy rainfall** at a few places & extremely heavy falls at isolated places very likely over coastal Tamil Nadu and heavy to very heavy rainfall at isolated places over south coastal Andhra Pradesh.

11th Nov.: Light to moderate rainfall at most places **with heavy to very heavy rainfall & extremely heavy falls** at isolated places very likely over coastal Tamil Nadu south coastal Andhra Pradesh.

12th Nov. Light to moderate rainfall at most places with **heavy rainfall** at isolated places very likely over Tamil Nadu.

(ii) Wind warning

- Squally wind speed reaching 40-50 kmph gusting to 60 kmph likely to prevail over southeast Bay of Bengal on 9th & 10th November, 45-55 kmph gusting to 65 kmph over southwest & adjoining west-central Bay of Bengal on 10th & 11th November and along & off Tamil Nadu & adjoining south Andhra Pradesh coasts on 11th November.

(iii) Sea condition

- Sea condition will be rough to very rough over southeast Bay of Bengal on 9th & 10th November, over southwest Bay of Bengal during 10th – 11th November and along & off Tamil Nadu & adjoining south Andhra Pradesh coasts on 11th November.

(iv) Fishermen Warning (in association with the likely formation of the system)

- Fishermen are advised not to venture into southeast Bay of Bengal on 9th & 10th November, over southwest Bay of Bengal during 10th – 11th November and along & off Tamil Nadu & adjoining south Andhra Pradesh coasts on 11th November. (Graphics enclosed).

(v) EXPECTED IMPACT & ACTION SUGGESTED

Localized Flooding of roads, inundation and water logging in low lying areas and closure of underpasses mainly in urban areas.

- Occasional reduction in visibility due to heavy rainfall.
- Disruption of traffic in major cities due to water logging in roads leading to increased travel time.
- Minor damage to kutchra roads.
- Possibilities of damage to vulnerable structure.
- Localized Landslides/Mudslides
- Damage to horticulture and standing crops in some areas due to inundation.
- It may lead to riverine flooding in some river catchments (for riverine flooding please visit Web page of CWC)
- Recreational & Tourism activities along the coastal belt may be restricted.

(b) Well Marked Low Pressure Area over central parts of Arabian Sea (remnant of the Depression)

The Well Marked Low Pressure Area over central parts of Arabian Sea persisted over the same region at 0830 hrs IST of 9th November, 2021. It is likely to move west-southwestwards during next 03 days.

Warnings:

(i) Rainfall

- No heavy rainfall warning in association with the system.

(ii) Wind warning

- Squally weather with wind speed reaching 40-50 kmph gusting to 60 kmph likely to prevail over central parts of Arabian Sea during next 24 hours.

(iii) Sea condition

- Sea condition will be rough to very rough over central parts of Arabian Sea during next 24 hours

(iv) Fishermen Warning

- Fishermen are advised not to venture into central parts of Arabian Sea during next 24 hours.

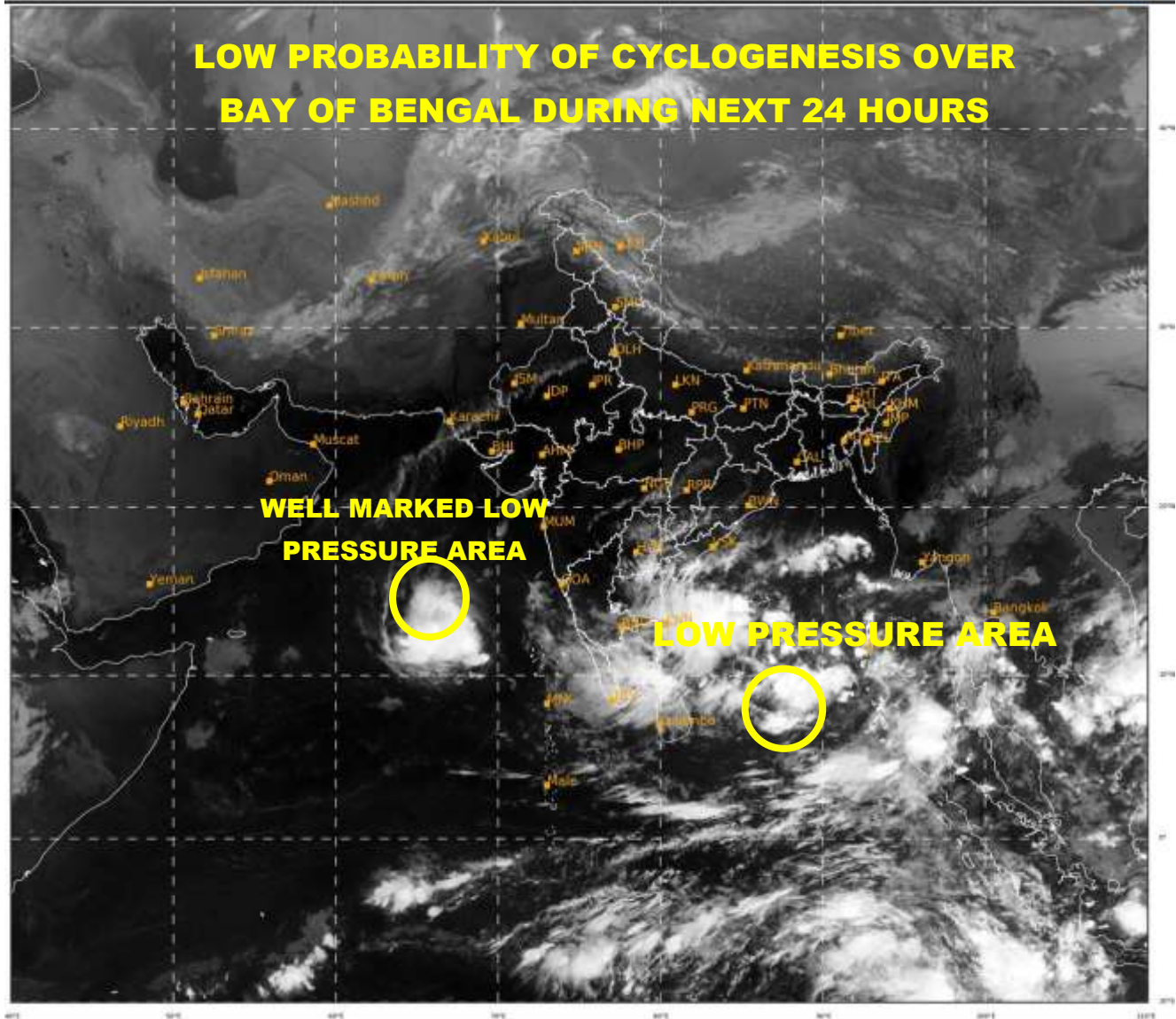
(Sunitha Devi. S)
Scientist-F, RSMC, New Delhi

Copy to: ACWC Mumbai/ CWC Ahmedabadr/MC Goa/CWC Thiruvananthapuram

LEGEND: Heavy Rainfall: 64.5 to 115.5mm, **Very Heavy Rainfall:** 115.6 to 204.4mm **Most Places:** more than 76% of total stations, **Isolated Places:** Less than 25% of total stations



LOW PROBABILITY OF CYCLOGENESIS OVER BAY OF BENGAL DURING NEXT 24 HOURS

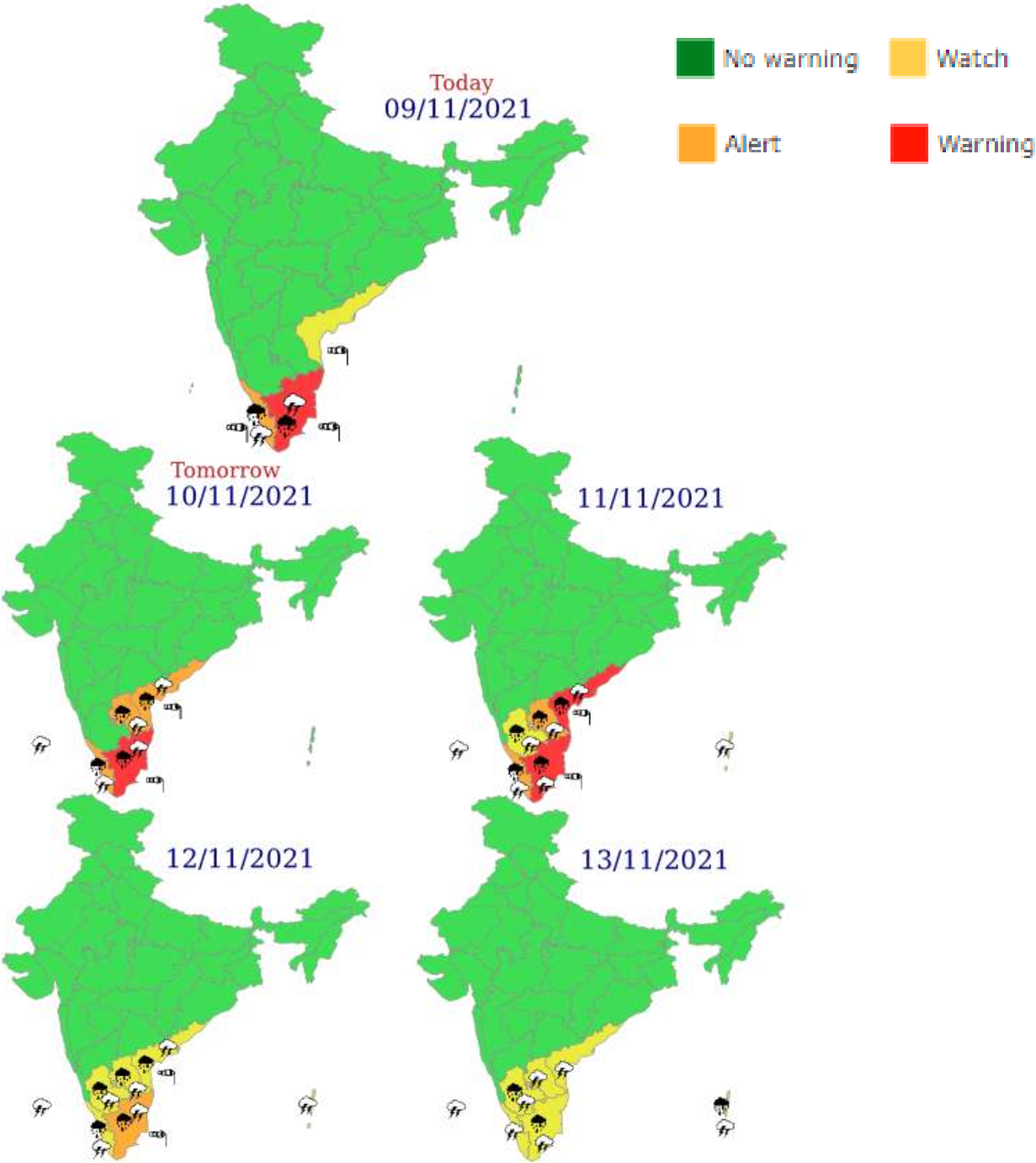


443

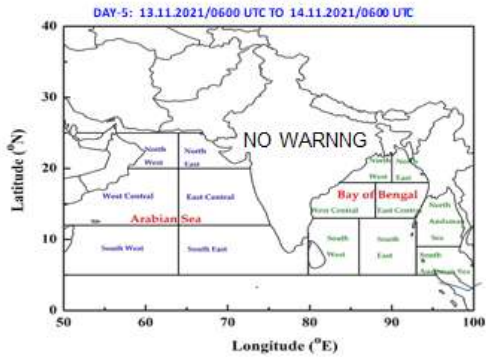
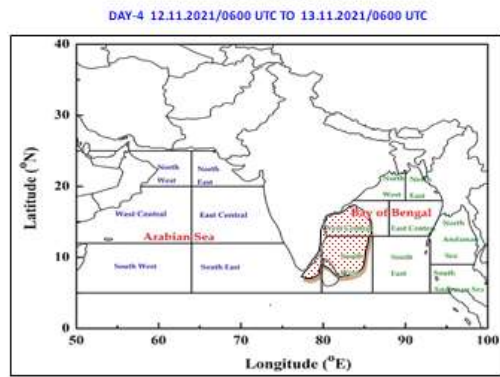
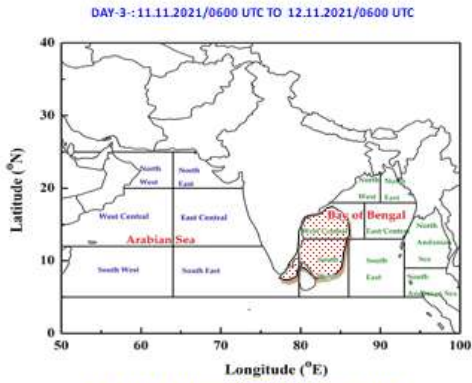
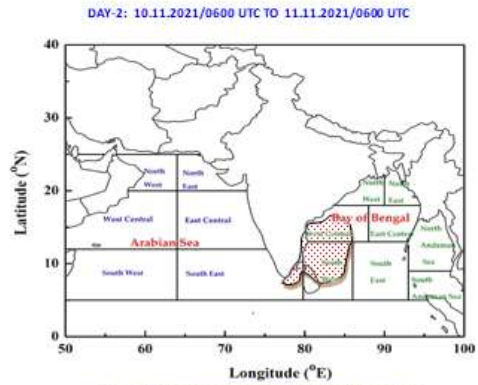
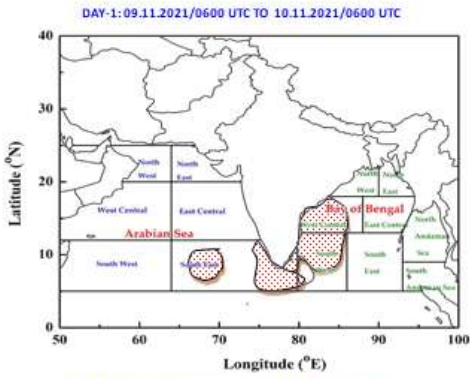
942

IMD, DELHI

Meteorological Sub-division level heavy rainfall warning



INDIA METEOROLOGICAL DEPARTMENT
FISHERMAN WARNING FOR BAY OF BENGAL AND ARABIAN SEA



AREA UNDER FISHERMEN WARNING

- 40-50 KMPH GUSTING TO 60 KMPH (SQUALLY WEATHER)
- 45-55 KMPH GUSTING TO 60 KMPH (SQUALLY WEATHER)
- 50-60 KMPH GUSTING TO 70 KMPH (STRONG WIND)